

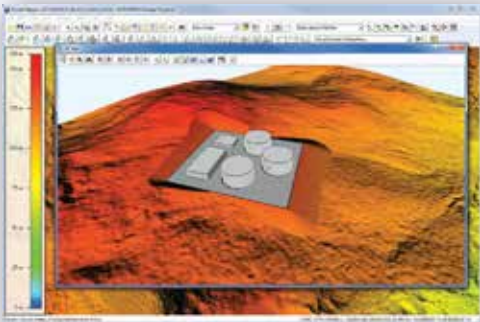
Surprisingly Affordable – Unexpectedly Powerful

## GIS SOFTWARE FOR EVERYONE

Global Mapper is a robust and inexpensive GIS application that combines a comprehensive array of spatial data processing tools with access to an unparalleled variety of data formats. Developed for both GIS professionals and map enthusiasts, this versatile software is equally well suited as a standalone GIS data management tool or as a complement to an established GIS infrastructure.

Trusted by thousands of GIS professionals around the world, Global Mapper's renowned capabilities are used by companies of all shapes and sizes. Industries include:

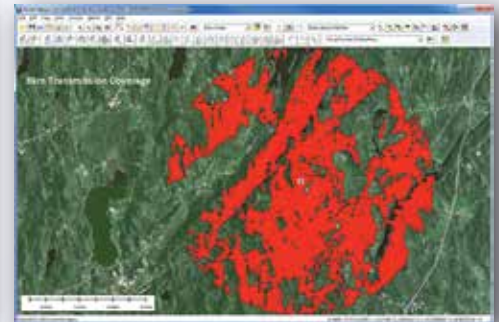
- Business Development
  - Mapping and Charting
  - Transportation
- Education
  - Natural Resources
  - Utilities
- Government
  - Public Safety
  - Oil & Gas



• Flattened terrain surface model with 3D Vector features



• Proximity analysis using concentric range rings



• Viewshed analysis showing the coverage area for a transmission signal

Global Mapper embodies virtually everything you need in a GIS: Complete interoperability with unparalleled data support; straightforward installation and setup; just the right balance of powerful data processing and ease of use; free and unlimited technical support; and genuinely affordable pricing.

Global Mapper is capable of displaying, converting, and analyzing virtually any type of geospatial data whether 2D or 3D, cloud hosted or local, raster or vector, flat file or spatial database. The software converts, edits, publishes, prints, tracks GPS, mosaics, tiles and allows users to conduct spatial analysis of the highest order including NDVI change detection, watershed and terrain analysis, volume calculations and much more.

## HIGHLIGHTS

- Supports 250+ File Formats
- Countless Free Online Data Sources
- Powerful LiDAR Processing Tools
- 3D Rendering & Elevation Tools
- Batch File Conversion
- Advanced Analysis Tools
- Volume Calculation & Terrain Modification Tools
- Extensive Drawing & Digitizing Tools
- GPS Data Management Tools
- Support for Scripting
- Geographic Calculator Integration
- Utilizes 64 Bit Speed

## RESOURCES

- Free Monthly Webinars
- Training Classes - Public, Online & Custom
- Getting Started Guide
- Academic Curriculums
- Social Media User Groups

Connect with us:



**Download a FREE Trial**  
[www.globalmapper.com.br](http://www.globalmapper.com.br)



**ENGESAT INTERNATIONAL S.A.**  
 Contacto: Laurent MARTIN, Diretor Comercial  
 Email: [ventas@engesat.com](mailto:ventas@engesat.com)  
[www.globalmapper.com.br](http://www.globalmapper.com.br)  
 Cel + 55 41 9134 0990  
 Tel + 55 41 3059 4561

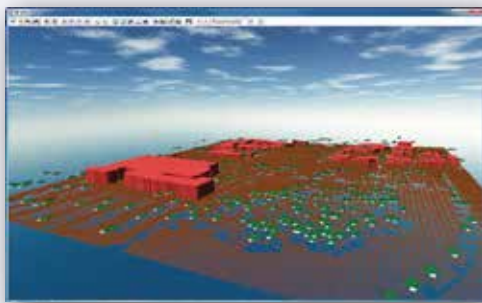
## WHAT'S NEW?

To address the ever-changing needs of the geospatial community, Global Mapper is in a continual state of development. Updates and enhancements are released on a frequent schedule to ensure that users have virtually immediate access to the latest tools and can work with current versions of all of the common data formats. Among the recent additions to Global Mapper are:

- Fly-through visualization and recording in the 3D Viewer



- Graph and Chart generation for visualizing patterns in vector or raster data
- Raster calculation for advanced analysis of imagery or grid layers
- Integration of the **Geographic Calculator's** datasource for powerful projection and coordinate management



- Automatic classification and feature extraction with the optional LiDAR module
- And Much More

Download a **FREE** trial at [www.globalmapper.com.br](http://www.globalmapper.com.br) and discover why Global Mapper will change the way you think about GIS.



- 2D and 3D viewer linked for editing, panning, zooming, and adding vector features

### BUILT-IN DATA ACCESS!

Global Mapper supports over 250 geospatial data types and offers built-in WMS support for direct access to countless free online data servers providing imagery, topographic maps, and elevation datasets for the entire world.

### STUNNING 3D RENDERING AND ELEVATION TOOLS

Global Mapper's 3D viewer is more powerful than ever! It now includes stunning capabilities to make the experience more lifelike. Users can simulate HD fly-through recordings, view/ track live GPS data, choose from existing sky templates to enable the Skybox tool as well as link the 2D and 3D viewer for easier editing.

### POWERFUL LIDAR PROCESSING TOOLS

View and process LiDAR point clouds with a billion points or more! With dramatically faster processing and displaying speeds, Global Mapper makes creating gridded surface models easy and fast. If you are looking for advanced point cloud analysis tools check out the **LiDAR Module** offered for Global Mapper v15 or higher

### ENERGY FEATURES

Global Mapper now includes all of the energy-focused features previously found in **Global Energy Mapper**. These features include leveraging the power of the Geographic Calculator for coordinate transformation in Global Mapper, symbols for the oil & gas industry, Site Pad Placement tools, Cut and Fill tools as well as Volumetric Calculation tools and much more.

### SCRIPTING

Did you know that many functions in Global Mapper can be performed by initiating a script? For more information visit our website today!

### SUPPORT FOR USER EXTENSIONS

Create your own custom apps to run in Global Mapper! Leverage the power of Global Mapper by purchasing our Software Developer Kit (SDK) to create custom toolbars and/or menu items. For more information contact our sales team at [ventas@engesat.com](mailto:ventas@engesat.com)

